

# Component Placing, Electrical

Applicable for Z610i

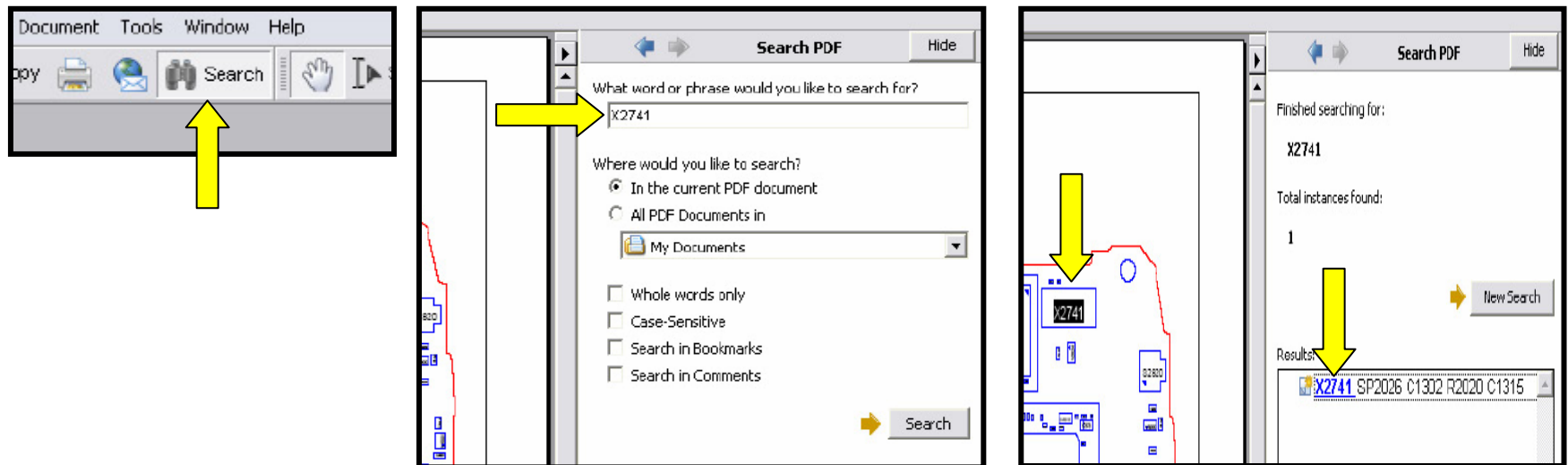
## Contents

<b>1</b>	<b>Mounting drawing table.....</b>	<b>2</b>
<b>2</b>	<b>Mounting drawing ROA 128 1893/2 .....</b>	<b>3</b>
<b>3</b>	<b>Mounting drawing ROA 128 1892/2 .....</b>	<b>6</b>
<b>4</b>	<b>Revision history .....</b>	<b>9</b>

# 1 Mounting drawing table

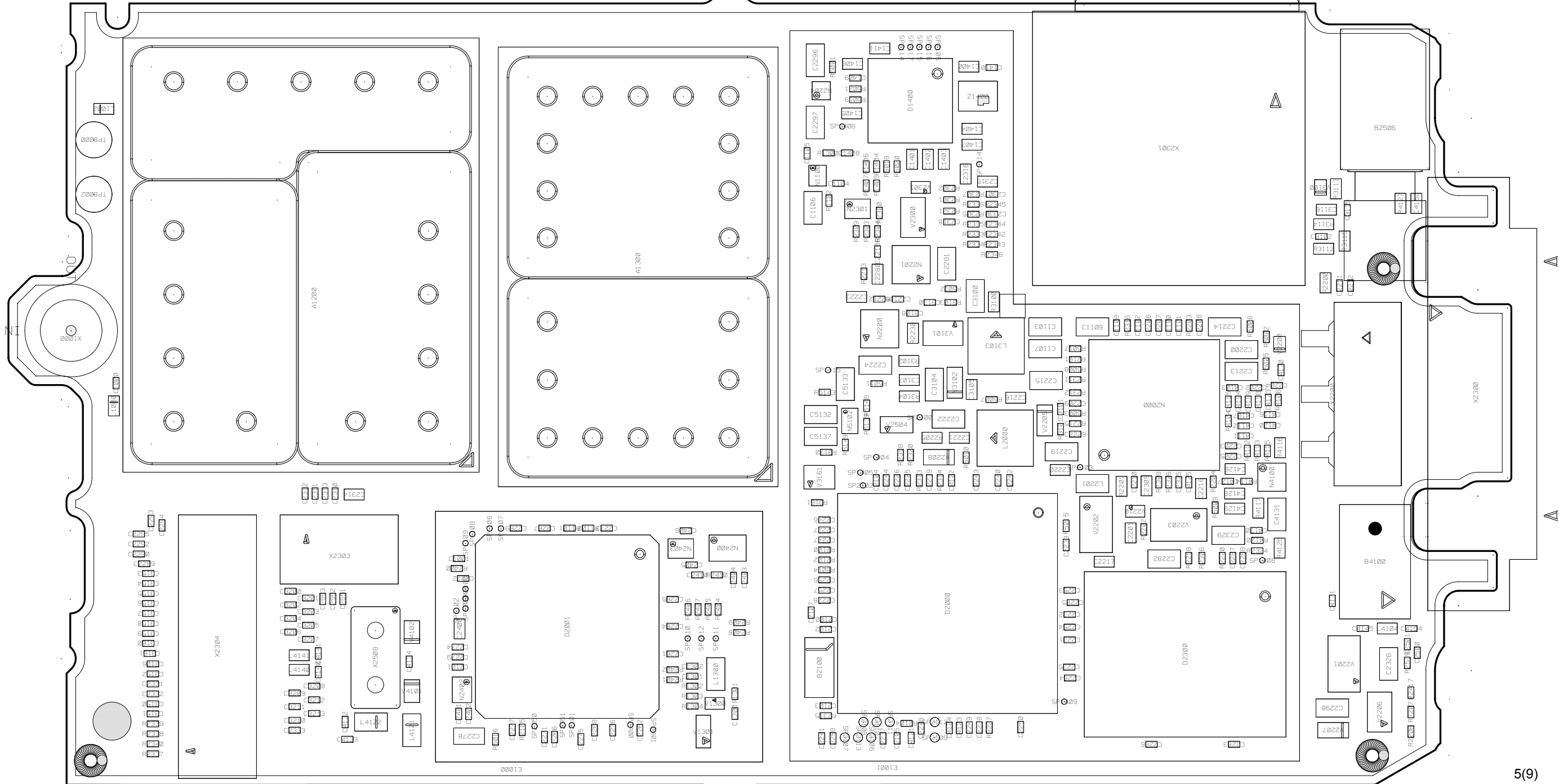
Board Number
1078-ROA 128 1893/2 A
1078 ROA 128 1892/2 A

By using the “Search” function in Adobe Reader and enter the component name you can find the position of the component. You can see the component name “highlighted” on the circuit board (use zoom to enlarge).

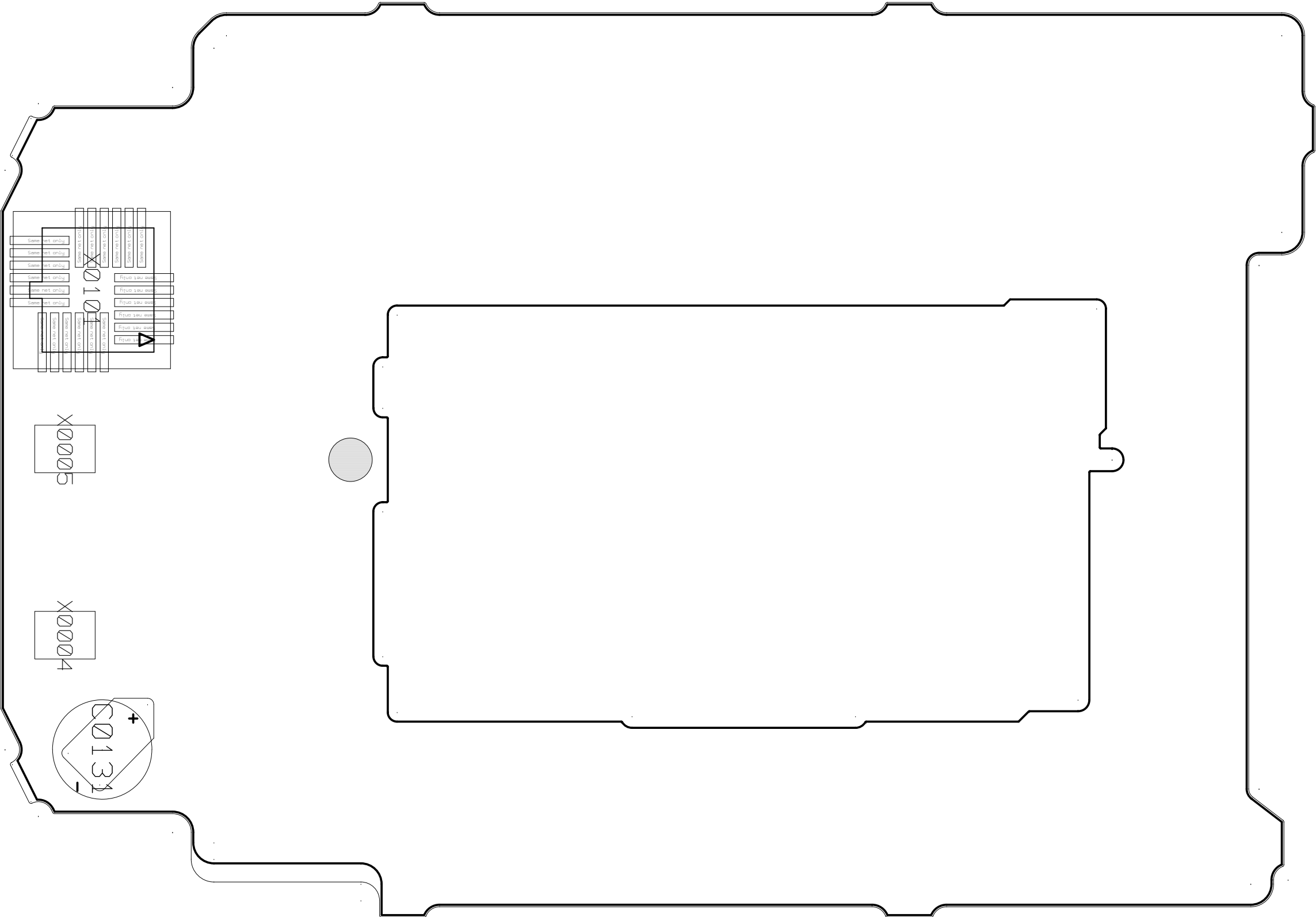


## **2 Mounting drawing ROA 128 1893/2**





### **3 Mounting drawing ROA 128 1892/2**







## 4 Revision history

Rev.	Date	Changes / Comments
A	2006-09-20	First release